



PaintFlex® for Rotomoulded Polyethylene Products

Permanent Glossy Cosmetic Painting on the Rotomoulding Polyethylene Products

Rotomoulded Polyethylene Products' customer strongly requested Glossy / Decorated finish products.

PaintFlex® is the answer for these requests.

Before PaintFlex®:

Rotomoulded Polyethylene Product has traditionally suffered from the disadvantage that it cannot be reliably Glossy painted & Decorated and can NOT ignore pinholes (Hygienic issue)

Now:

PaintFlex® has solved permanently the common problems like Decorating & Pinhole (Hygienic issue) for Rotomoulded Polyethylene Products.



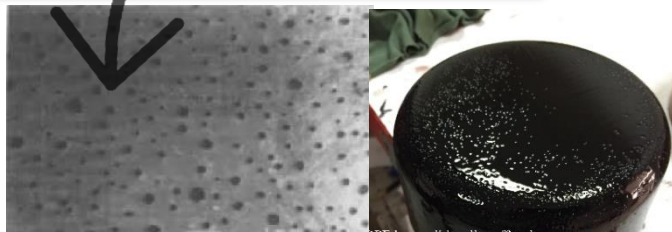


About *HW*® LLDPE Powder Pinhole Free-Medical Grade

It is innovated polymers, uniquely designed For Rotational Molding, where Non-Porous & Pinhole Free surface (Hygienic) required.

What is Porous/Pinhole surface?

- Air trapped between the powder particles Form air pockets during heating.



Conventional LLDPE:

Accumulation of dust, dirt, bacteria's and others on the surface due Porous Finishing, It is almost impossible to clean by water, Solvent Thinner or other cleaning agents.

HW® PE Powder-Medical Grade Benefits

- ✓ Suitable with PaintFlex® Adhesion Paint to have Glossy Surface
- ✓ Ready to use it in your conventional Metal or Aluminum Molding & at your standard Cooking temperature.
 - ➔ Not request Special or technical methods
- ✓ No Accumulation of dust, dirt, bacteria's and others on the surface
- ✓ Easy to clean by wet and/or dry cloth.
- ✓ Enhance the surface appearance & Hygienic.



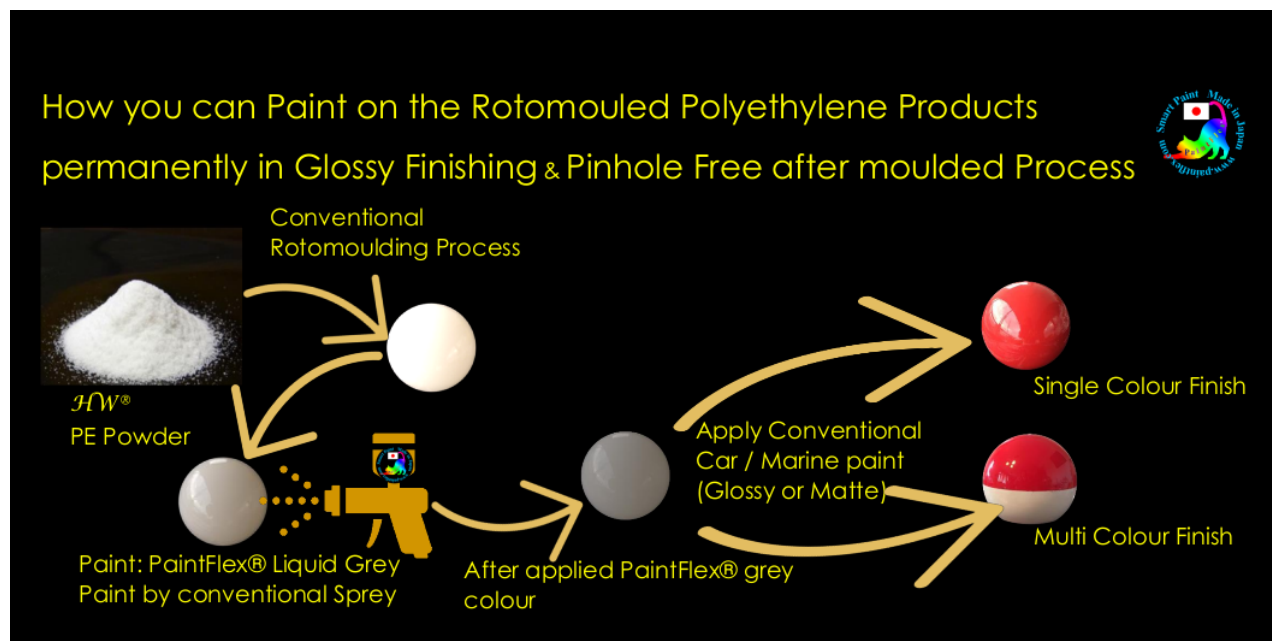
About PaintFlex® Paint for Rotomoulded Polyethylene Products

Allow binding on itself as a Binding Paint / Primer direct most Conventional 2K Color and functional Car /Marine Color Paints.

Combined the permanent Adhesion of PaintFlex® on the Polyethylene & *HW*®LLDPE Powder -Pinhole Free to Create WOW & Eye Catching - Hygienic Products

The applications:

- ✓ Apply by standard painting tools like spray/Brush/Roller
- ✓ No Need Flame, Corona and other Treatment's for adhesion.





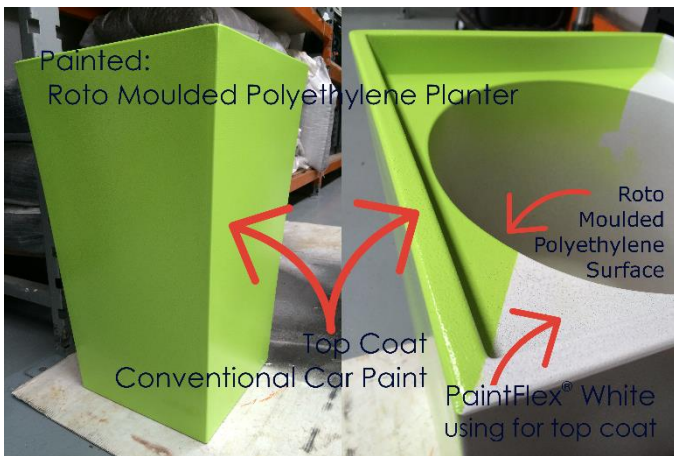
Add Eye Catching Glossy Cosmetics & Decoration & Hygienic Finishing on the Rotomoulded Polyethylene Products.



Multiple Glossy Color finishing on the same substrate



Compliances
Food contact friendly
RoHS (Restriction of Hazardous Substances)



Decorating & Labeling



Binding Stencil Ink,
Silk Screen, Pad
printing Ink & Self
Adhesive Stickers-
Barcode





PaintFlex® Other Benefits:

- ✓ Super Glossy Finishing
 - ↳ up to the Car-Marine Paint (top coat) Glossy Level
- ✓ Resistance to expand/Contract & Vibration.
- ✓ Resistance to Peeling and cracking.
- ✓ Scratching resistance
 - ↳ up to the Car-Marine Paint (top coat) Hardness Level
- ✓ Single Component, No Pot Life, shelf Life is 5 years.
- ✓ Power Wash resistance (If it needs Clean by water)
- ✓ Non time limit for applying top coat after applied PaintFlex®
- ✓ It can be painted all size & shape products.



High Glossy Finishing

On the Untreated Polyolefin Plastics
(PE/PP & Other Hard to Bond Plastics)

by **PaintFlex®** Paint system

Combined the permanent Adhesion of PaintFlex® on the Polyethylene & *HW*® LLDPE Powder -Pinhole Free to Create WOW & Eye Catching - Hygienic Products

