



Paint Flex[®] Extra
(Anti-Rust Paint)

How to Apply
on the Iron/Steel Products
included Welding & Solid Rust part



PaintFlex® How to Apply on the Iron/Steel Products

Step B01:

If there is loose rust, please remove it.

Step B02:

Clean the Iron/Steel Products

Step B02.01.

If need blow the dust off with Air gun.

Step B02.02.

Wipe off oil and dirt on the Products-> Cleaning by:

- ✓ Toluene (Before go to Step 03, you do not need to wait.) or
- ✓ Acetone (Before go to Step 03, please wait 10 Mins or more)



These rust is no problem for painting by PaintFlex®.



PaintFlex® How to Apply on the Iron/Steel Products

Step B03:

Paint 1st Layer

Max. 3 Bar (Very important)

Nozzle 0.8 ~ 1.1mm

Very Light Smoke (Most of time,
you can not see the colour of PaintFlex®.)

PaintFlex® How to Apply on the Iron/Steel Products



Step B04: Wait minimum 10minutes





PaintFlex® How to Apply on the Iron/Steel Products

Step B05:

Paint 2nd Layer

Max. 3 Bar (Very important)

Nozzle 0.8 ~ 1.1mm

Light Smoke

(You can start seeing the colour of PaintFlex®.)

PaintFlex® How to Apply on the Iron/Steel Products



Step B04: Wait minimum 10minutes





PaintFlex® How to Apply on the Iron/Steel Products

Step B05:

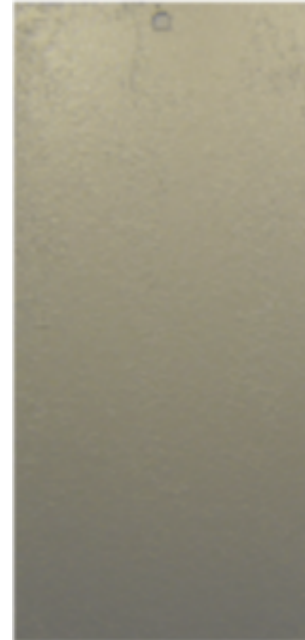
Paint 3rd Layer

Max. 3 Bar (Very important)

Nozzle 0.8 ~ 1.1mm

Smoke

(You can see the colour of PaintFlex®.)



PaintFlex® How to Apply on the Iron/Steel Products



Step B06: Wait minimum 2 hours





PaintFlex® How to Apply on the Iron/Steel Products

You can continue,
After 2 hours and more,

- ✓ Painting conventional Lacquer or
- ✓ Painting Other conventional Paint or
- ✓ Graphic Work or
- ✓ Affixing or
- ✓ etc...



PaintFlex® How to Apply on the Iron/Steel Products

Additional Note:

Do not forget: PaintFlex® does not have pot life

After painting, please store the remaining diluted paint included inside of spray gun into storage-can.

You can use it, when you need....